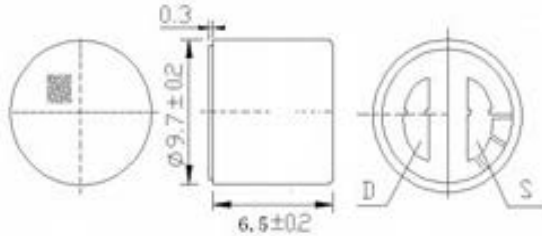
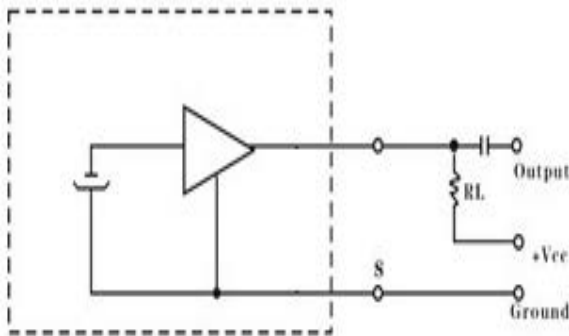


EM9767

Dimensions Drawing (Unit:mm)

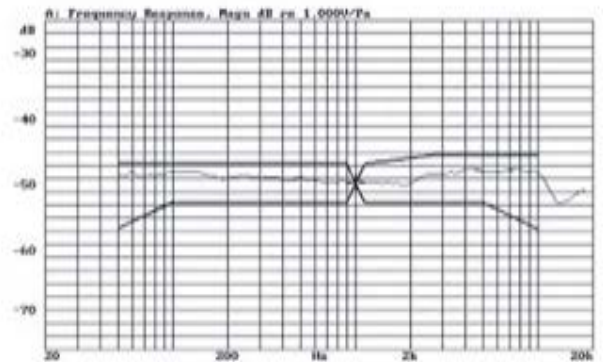


Schematic Diagram Curve



$C=1\mu F R_L=2.2K\Omega V_{cc}=4.5V$

Typical Frequency Response Curve



Specifications

Dimensions	9.7x6.7mm
Sensitivity(0dB=1v/Pa 1000Hz)	-48~66dB
Frequency Range	50~20KHz
Directivity	Omni Directional
Impedance	Max2.2K Ω at f=1KHz
Current Consumption	>500uA
Standard Operation Voltage	3V
Operation Voltage Range	1.5~10V
S/N Ratio	>58dB